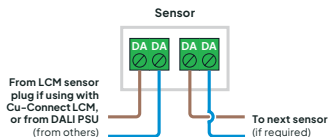
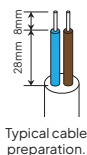
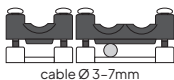


# Microwave DALI DIMMING Sensor Range

## Wiring

Terminate cables into connections as per wiring diagram below and fit wiring cover.

Secure the cable/bar clamp using 14mm screws (supplied). Do not overtighten.



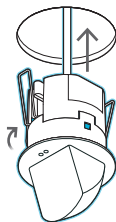
The pluggable green connectors can be removed from the sensor if needed to make wiring easier.

If supplying your own cable for sensor connections, please use 2-core 0.75mm<sup>2</sup> (min.) Mains rated cable. The working voltage of the sensor is 16V approx, but as DALI Connections are not defined as Safety Extra Low Voltage (SELV), Mains-rated cable must be used for connections.

## Flush fixing

Drill a Ø 73mm hole in the ceiling.

Push springs upwards and insert the sensor into the hole.



## Surface fixing

Separate head and power supply by pressing the blue release lug.

Remove springs by pressing spring legs together and unhook them from power supply body.

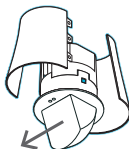
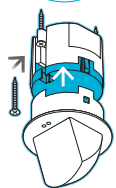
Fix direct to surface using suitable 3.5mm or No. 6 screws (not supplied).

Refit head to power supply.

Attach the surface mounting sleeves (SMSLW (White) or SMSLW (Black) sold separately) to the sensor.

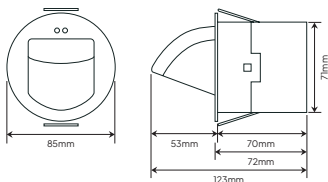
**The flat face of the sensor head should face the intended detection area.**

For BESA box mounting please refer to the product datasheet (use QR code overleaf).



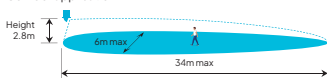
**WARNING:** This device should be installed by a qualified electrician in accordance with the latest edition of the UK Wiring regulations.

## Dimensions

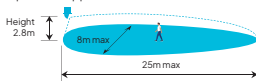


## Detection Range

### Corridor application



### Open area application



Distances shown with sensor set to optimum sensitivity  
The flat face of the sensor should face the detection area

## Specifications

<b>Supply Voltage</b>	Via DALI PSU (9.5VDC to 22VDC)
<b>No of DALI Drivers</b>	64 max.
<b>Terminal Capacity</b>	0.5mm <sup>2</sup> to 1.5mm <sup>2</sup>
<b>Time Out Period</b>	1 sec to 240mins
<b>Working Temperature</b>	-10 to +35°C
<b>Material (Casing)</b>	ABS Dev962 UL 94 VO
<b>Microwave Frequency</b>	24 GHz

### Compliance

2014/35/EU Low Voltage Directive  
2014/30/EU Electromagnetic Compatibility Directive  
2014/53/EU Radio Equipment Directive  
011/65/EU Restriction of Hazardous Substances (RoHS) Directive

### Microwave Safety

The microwave radiation emitted by this product is extremely low power and complies with International Standard "IEEE C95.1-2019 Standard for Safety Levels with Respect to Human Exposure to Electric, Magnetic and Electromagnetic Fields, 0Hz to 300GHz."

## Further Information



Scan QR code  
for full product  
datasheet

Download the  
Cucumber Controls  
app on App Store  
or Google Play



**Cucumber**  
Lighting Controls

Blackhill Dr, Wolverton Mill,  
Wolverton, Milton Keynes, MK12 5TS

**03330 347799**

**enquiries@cucumberlc.co.uk**

**www.cucumberlc.co.uk**

