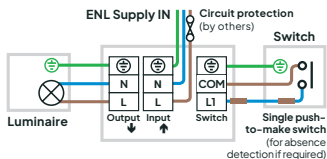
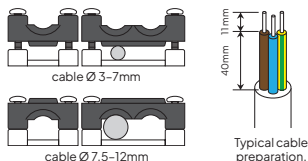


Microwave SWITCHING Sensor Range

Wiring

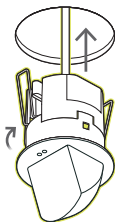
Terminate cables into connections as per wiring diagram below. Secure the cable/bar clamp using 14mm screws (supplied). Do not overtighten. Fit the wiring cover.



Flush fixing

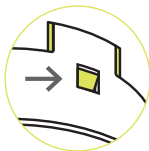
Drill a \varnothing 73mm hole in the ceiling.

Push springs upwards and insert the sensor into the hole.

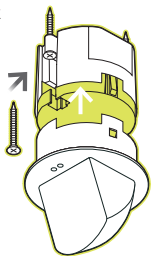


Surface fixing

Separate head and power supply by pressing the yellow release lug.



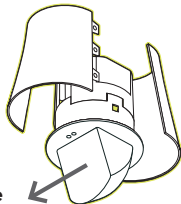
Remove springs by pressing spring legs together, and unhook them from the power supply body.



Wire connections as shown opposite, and fit wiring cover.

Fix direct to surface using suitable 3.5mm or No.6 screws (not supplied).

Refit head to power supply.



Attach the surface mounting sleeves (SMSLW (White) or SMSLB (Black) sold separately) to the sensor.

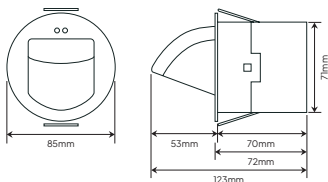
The flat face of the sensor head should face the intended detection area.

For BESA box mounting please refer to the product datasheet (use QR code overleaf).



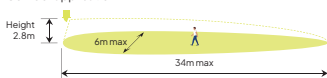
WARNING: This device should be installed by a qualified electrician in accordance with the latest edition of the UK Wiring regulations.

Dimensions

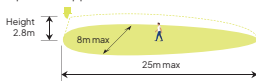


Detection Range

Corridor application



Open area application



Distances shown with sensor set to Optimum sensitivity
The flat face of the sensor should face the detection area

Specifications

Supply Voltage	100VAC to 230VAC
Supply Frequency	50/60Hz
Relay Max. Output Current	6 Amps @ 230VAC
Terminal Capacity	0.5mm ² to 1.5mm ²
Time Out	1 sec to 240mins
Working Temperature	-10 to +35°C
Circuit Protection	≤10A MCB Type C
No of DALI Drivers	Maximum 20. Please refer to main datasheet
Material (Casing)	ABS Dev962 UL 94 VO
Microwave Frequency	24 GHz

Compliance

2014/35/EU Low Voltage Directive
2014/30/EU Electromagnetic Compatibility Directive
2014/53/EU Radio Equipment Directive
2011/65/EU Restriction of Hazardous Substances (RoHS) Directive

Microwave Safety

The microwave radiation emitted by this product is extremely low power and complies with International Standard "IEEE C95.1-2019 Standard for Safety Levels with Respect to Human Exposure to Electric, Magnetic and Electromagnetic Fields, 0Hz to 300GHz."

Further Information



Scan QR code for full product datasheet

Download the Cucumber Controls app on App Store or Google Play



Blackhill Dr, Wolverton Mill,
Wolverton, Milton Keynes, MK12 5TS

03330 347799

enquiries@cucumberlc.co.uk

www.cucumberlc.co.uk

