

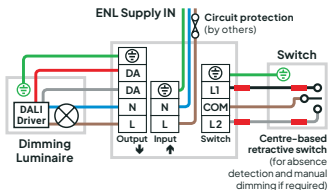
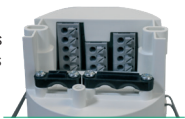
Quick Installation Guide

High Bay DALI DIMMING Sensor Range



Wiring

Terminate cables into connections as per wiring diagram below and fit wiring cover.



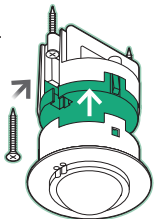
Wiring diagram for up to 10 drivers using Switched Live relay output. If wiring to more than 10 drivers, refer to alternative wiring diagram in main datasheet.

Surface fixing

Separate head and power supply by pressing the green release lug.



Remove springs by pressing spring legs together and unhook them from power supply body.



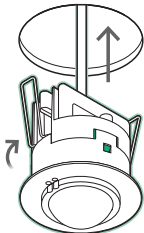
Fix to Besa box or direct to surface using suitable 3.5mm or No.6 screws (not supplied).

Refit head to power supply.

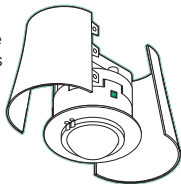
Flush fixing

Drill a $\varnothing 73\text{mm}$ hole in the ceiling.

Push springs upwards and insert the sensor into the hole.



Attach the surface mounting sleeves (SMSLW (White) or SMSLB (Black) sold separately) to the sensor.



WARNING: This device should be installed by a qualified electrician in accordance with the latest edition of the UK Wiring regulations.

Optional Directional Shield

For altering the detection pattern to prevent triggering such as at the end of a racking aisle.



HBSW (White) or HBSB (Black) (not supplied).

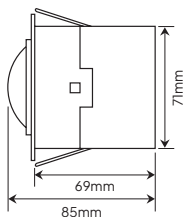
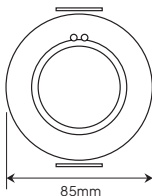


Simply clip the shield's alignment lugs into the bezel.

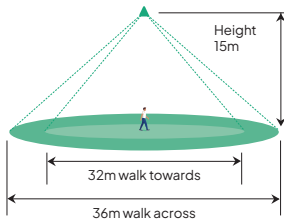


Adjustable aperture.

Dimensions



Detection Range



Specifications

Supply Voltage	100VAC to 230VAC	Material (Casing)	ABS Dev962 UL 94 VO
Supply Frequency	50/60Hz	Compliance 2014/35/EU Low Voltage Directive 2014/30/EU Electromagnetic Compatibility Directive 2014/53/EU Radio Equipment Directive 2011/65/EU Restriction of Hazardous Substances (RoHS) Directive	
Relay Max. Output Current	6 Amps @ 230VAC		
Terminal Capacity	0.5mm ² to 1.5mm ²		
Time Out	1 sec to 240mins		
Working Temperature	-10 to +35°C		
Circuit Protection	≤10A MCB Type C		
No of DALI Drivers	Maximum 20. Please refer to main datasheet		

Further Information



Scan QR code for full product datasheet

Download the Cucumber Controls app on App Store or Google Play



Blackhill Dr, Wolverton Mill,
Wolverton, Milton Keynes MK12 5TS

03330 347799

enquiries@cucumberlc.co.uk

www.cucumberlc.co.uk



QIG-PIRDMHBR-V1