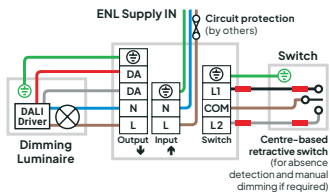
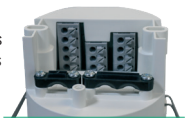


# Ceiling DALI DIMMING Sensor Range



## Wiring

Terminate cables into connections as per wiring diagram below and fit wiring cover.

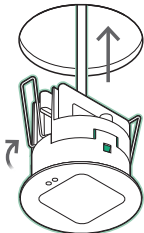


Wiring diagram for up to 10 drivers using Switched Live relay output. If wiring to more than 10 drivers, refer to alternative wiring diagram in main datasheet.

## Flush fixing

Drill a  $\varnothing 73\text{mm}$  hole in the ceiling.

Push springs upwards and insert the sensor into the hole.



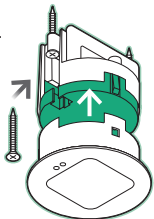
## Surface fixing

Separate head and power supply by pressing the green release lug.



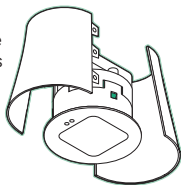
Remove springs by pressing spring legs together and unhook them from power supply body.

Fix to Besa box or direct to surface using suitable 3.5mm or No.6 screws (not supplied).



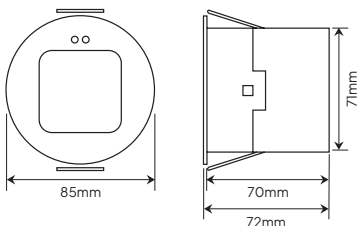
Refit head to power supply.

Attach the surface mounting sleeves (SMSLW (White) or SMSLB (Black) sold separately) to the sensor.

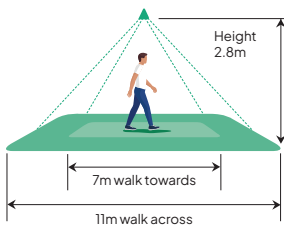


**WARNING:** This device should be installed by a qualified electrician in accordance with the latest edition of the UK Wiring regulations.

## Dimensions



## Detection Range



## Specifications

<b>Supply Voltage</b>	100VAC to 230VAC	<b>Material (Casing)</b>	ABS Dev962 UL 94 VO
<b>Supply Frequency</b>	50/60Hz	<b>Compliance</b> 2014/35/EU Low Voltage Directive 2014/30/EU Electromagnetic Compatibility Directive 2014/53/EU Radio Equipment Directive 2011/65/EU Restriction of Hazardous Substances (RoHS) Directive	
<b>Relay Max. Output Current</b>	6 Amps @ 230VAC		
<b>Terminal Capacity</b>	0.5mm <sup>2</sup> to 1.5mm <sup>2</sup>		
<b>Time Out</b>	1 sec to 240mins		
<b>Working Temperature</b>	-10 to +35°C		
<b>Circuit Protection</b>	≤10A MCB Type C		
<b>No of DALI Drivers</b>	Maximum 20. Please refer to main datasheet		

## Further Information



Scan QR code for full product datasheet

Download the Cucumber Controls app on App Store or Google Play



Blackhill Dr, Wolverton Mill,  
Wolverton, Milton Keynes, MK12 5TS

**03330 347799**

**enquiries@cucumberlc.co.uk**

**www.cucumberlc.co.uk**

